

# woods square

OFFICE • SOLO • F&B • RETAIL • CHILDCARE

SOLO 1 & 2  
FLOOR PLANS





GATEWAY TO THE NORTH



# 1ST STOREY PLAN

woods  
square

OFFICE • SOLO • F&B • RETAIL • CHILDCARE



- 1 Arrival Plaza
- 2 Driveway to Carpark
- 3 Tower 1 Entrance Lobby
- 4 Waiting Lounge
- 5 Garden
- 6 West Entrance Plaza
- 7 Covered Walkway
- 8 Landscape Atrium
- 9 The Still Courtyard
- 10 SOLO 1 Entrance Lobby
- 11 Civic Plaza Entrance
- 12 Retail Square Drop-off
- 13 Retail Lift Lobby
- 14 Tower 2 Entrance Lobby
- 15 Deck
- 16 Courtyard
- 17 Water Court at Basement
- 18 SOLO 2 Entrance Lobby
- 19 Bike Parking Lots
- 20 East Entrance Plaza



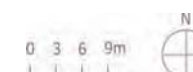
# SKY DECK PLAN

## woods square

OFFICE • SOLO • F&B • RETAIL • CHILDCARE

- |                        |                         |
|------------------------|-------------------------|
| 1 Lift Lobby           | 8 Sky Bridge Walk       |
| 2 Pavilion             | 9 Outdoor Shower        |
| 3 Sanctuary Garden     | 10 Swimming Pool        |
| 4 Seating Area         | 11 Wading Pool          |
| 5 M&E Services         | 12 Pool Deck            |
| 6 West Look-Out Garden | 13 East Look-Out Garden |
| 7 SOLO Gym             | 14 Linear Garden        |

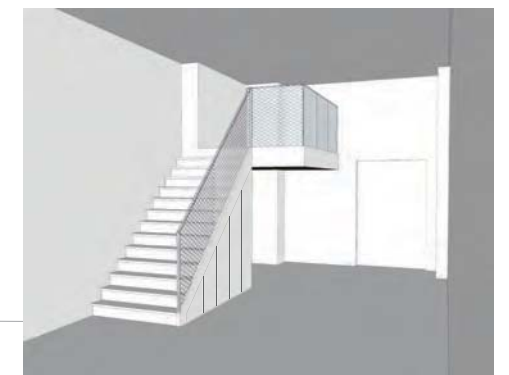
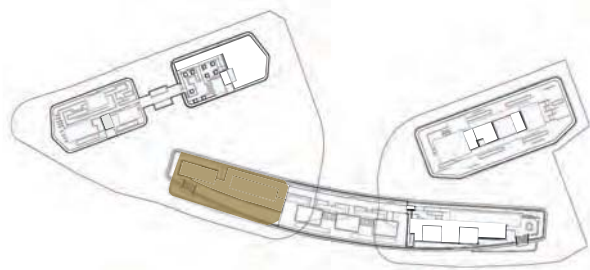
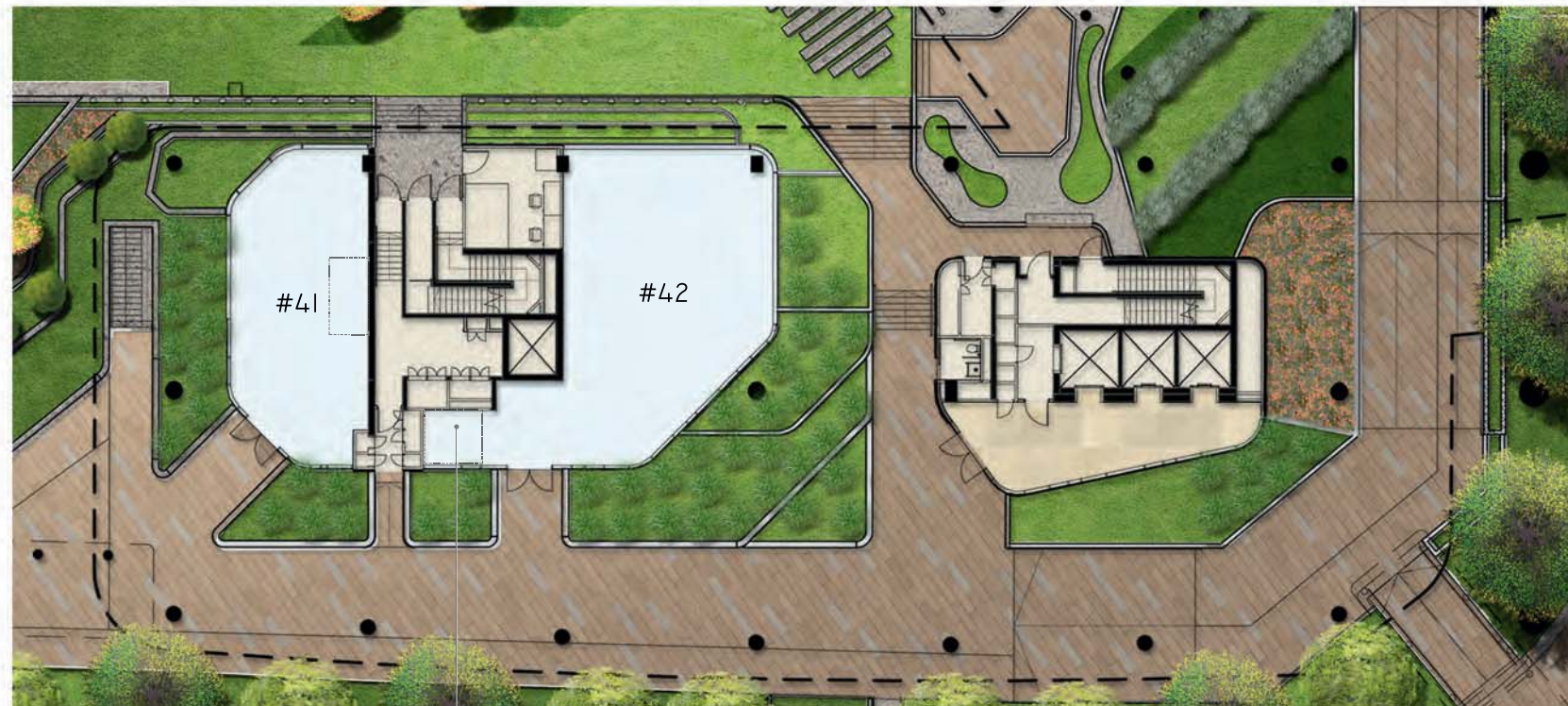
The above plan is subject to changes as may be approved by the relevant authorities.



**SOLO 1**



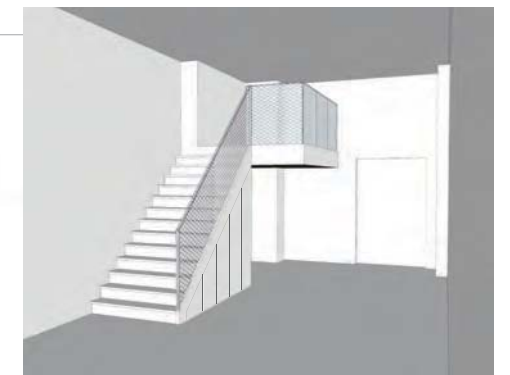
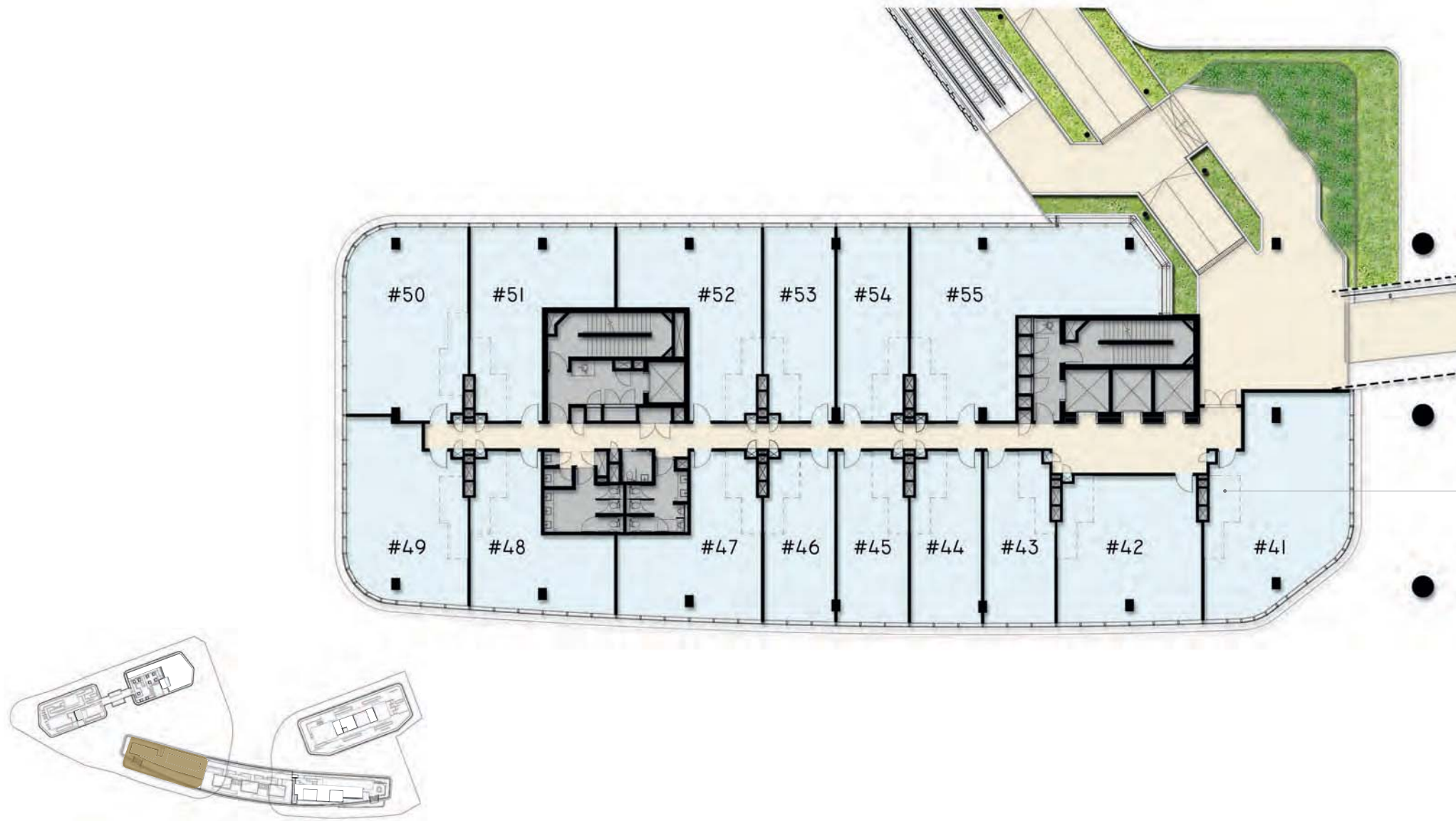
## SOLO 1 | 1ST STOREY



Platform Furniture

The above plan is subject to changes as may be approved by the relevant authorities.

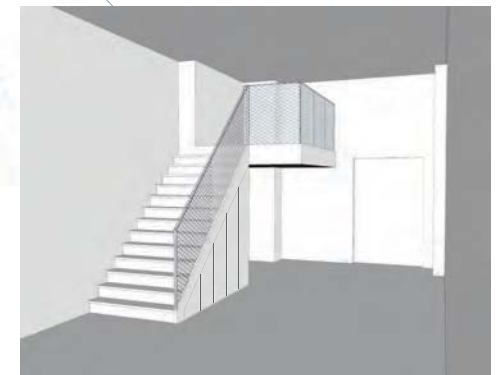
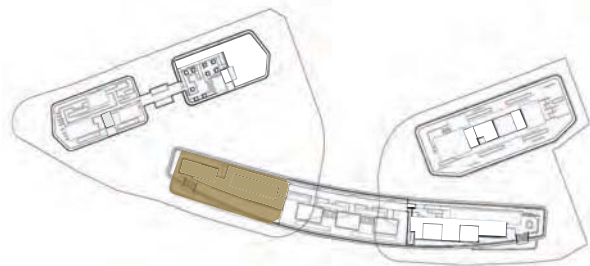
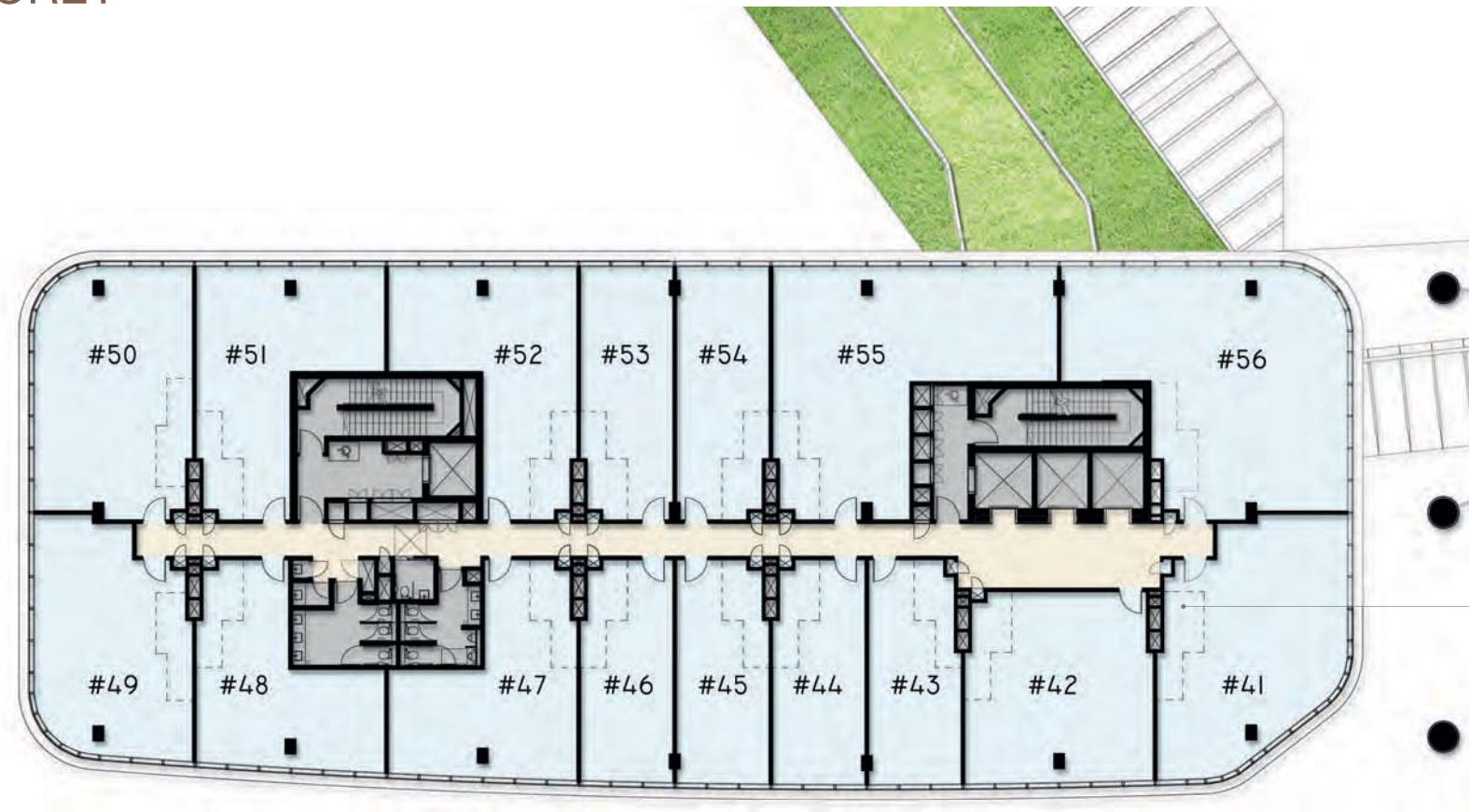
## SOLO 1 | 2ND STOREY



Platform Furniture



## SOLO 1 | 3RD - 4TH STOREY



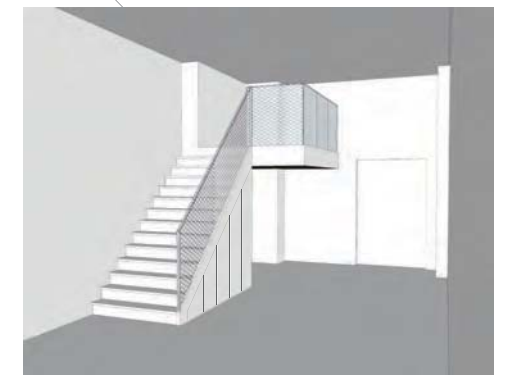
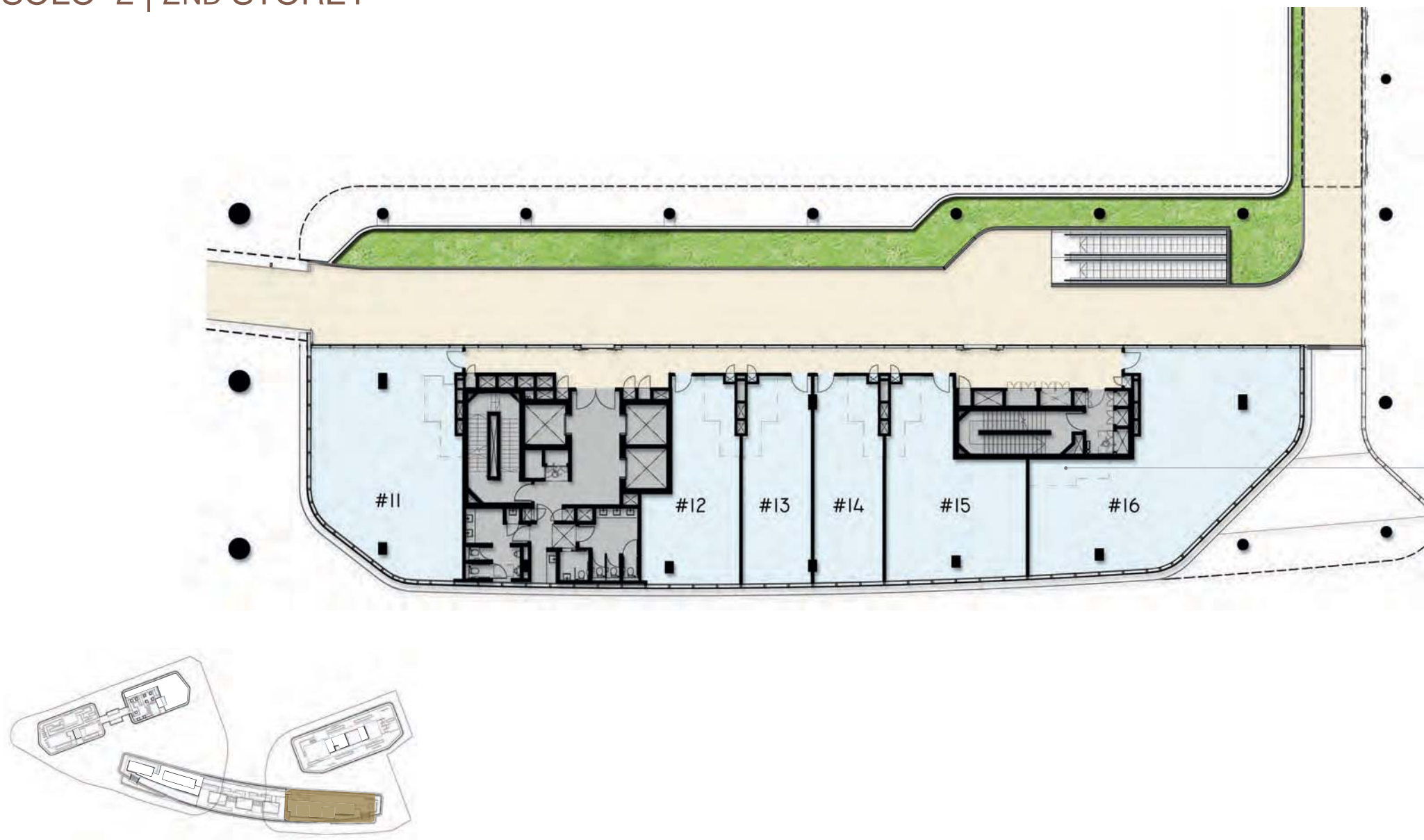
Platform Furniture



**SOLO 2**



## SOLO 2 | 2ND STOREY



Platform Furniture



## SOLO 2 | 3RD - 4TH STOREY



The above plan is subject to changes as may be approved by the relevant authorities.



SEIZE THE FIRST-MOVER ADVANTAGE

Call 62219979  
[www.fareast.com.sg/woodssquare](http://www.fareast.com.sg/woodssquare)



/woodssquareoffices



DISCLAIMER: The information contained herein is subject to change and cannot form part of an offer or contract. While every reasonable care has been taken in providing this information, the developer or its agent cannot be held responsible for any inaccuracies. The developer does not warrant or represent in any manner whatsoever the accuracy, correctness, adequacy, completeness or suitability of the information contained herein. Illustrations in the brochure are artist's impressions, which serve only to give an approximate idea of the project. All artist's impressions and all plans are subject to any amendments as may be approved by the relevant authorities.

The developer reserves any and all copyright, design and other proprietary rights in and to this document (or any part thereof) including all or any part of the information, material or artwork contained therein. Unless otherwise expressly agreed to in writing, this document or any part thereof may not be copied, modified, distributed, reproduced or reused without the express written consent of the developer.

Developer: Woodlands Square Pte Ltd (201412920E) • Tenure: Leasehold 99 years from 15 July 2014 • Encumbrance On Land: Mortgage No. ID/992362L in favour of DBS Bank Ltd. • Land Description: Mk 13 Lots 6117T & 6119K at Woodlands Square • Expected Vacant Possession Date: 31 December 2021 • Expected Legal Completion Date: 31 December 2024

(2016/06/20/P1000)